



WILLIAM & MARY

CHARTERED 1693

KEY PERFORMANCE INDICATORS

Board of Visitors Academic Affairs Committee

September 26, 2024

ACADEMIC AFFAIRS 2024-25 KPIs

- Student Success
(Graduation outcomes)
- Post-graduate outcomes
(Income levels)
- Faculty Impact-Teaching
(Student-Faculty ratio)
- Faculty Impact-Research
(Citations/Scholarship)
- Research
(Sponsored Research Expenditures)
- Enrollment
(Pell Composition)

STUDENT SUCCESS

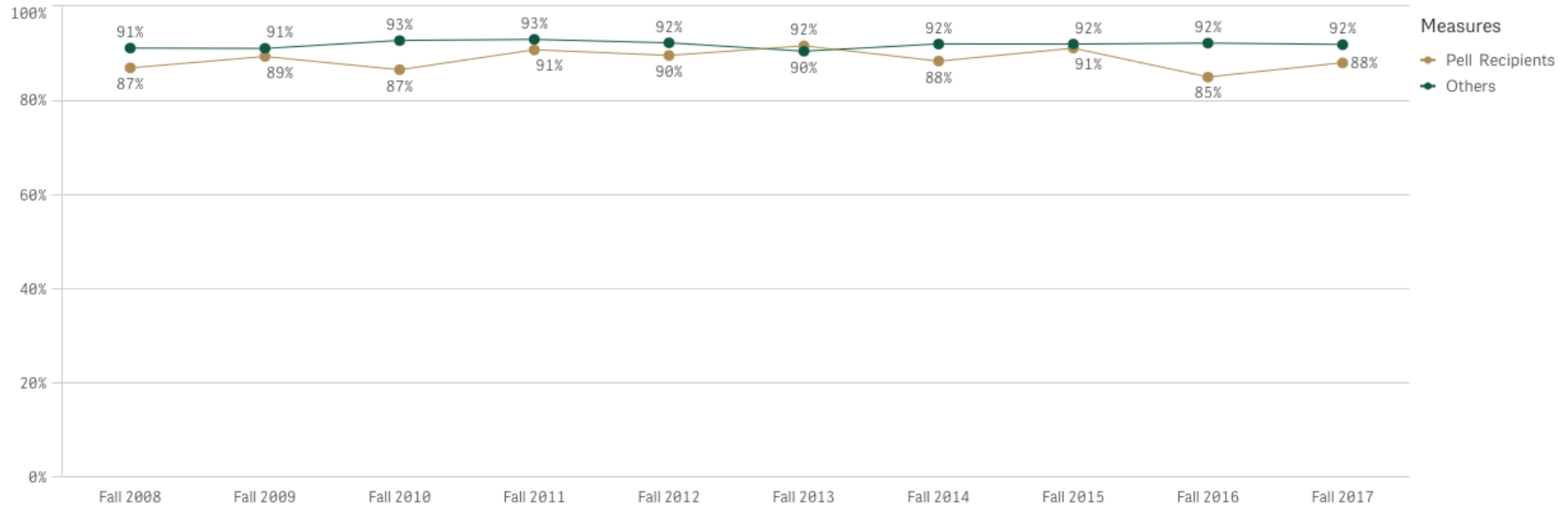
Group Comparisons on 6-year Graduation Rate of First-time, First-Year Students

Pell Recipients

Stafford Loan Recipients*

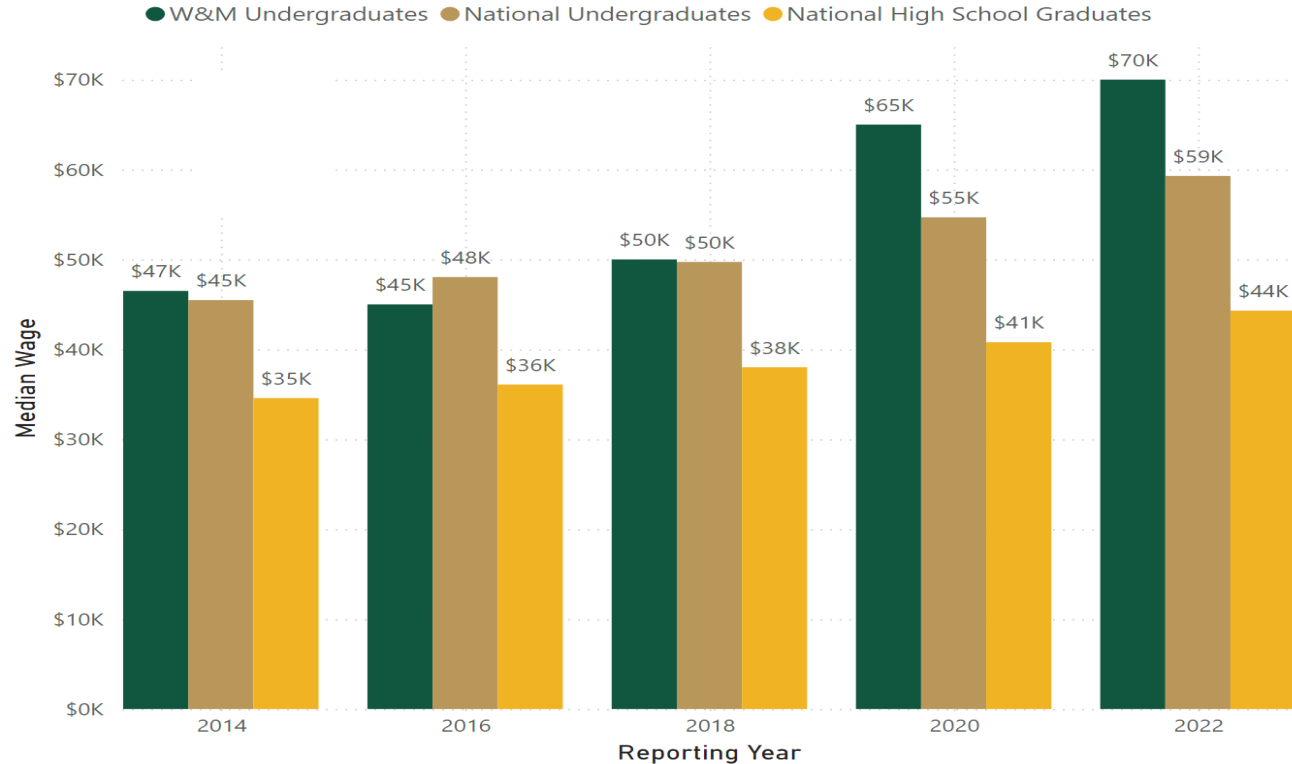
Pell Recipients

Stafford Loan Recipients*



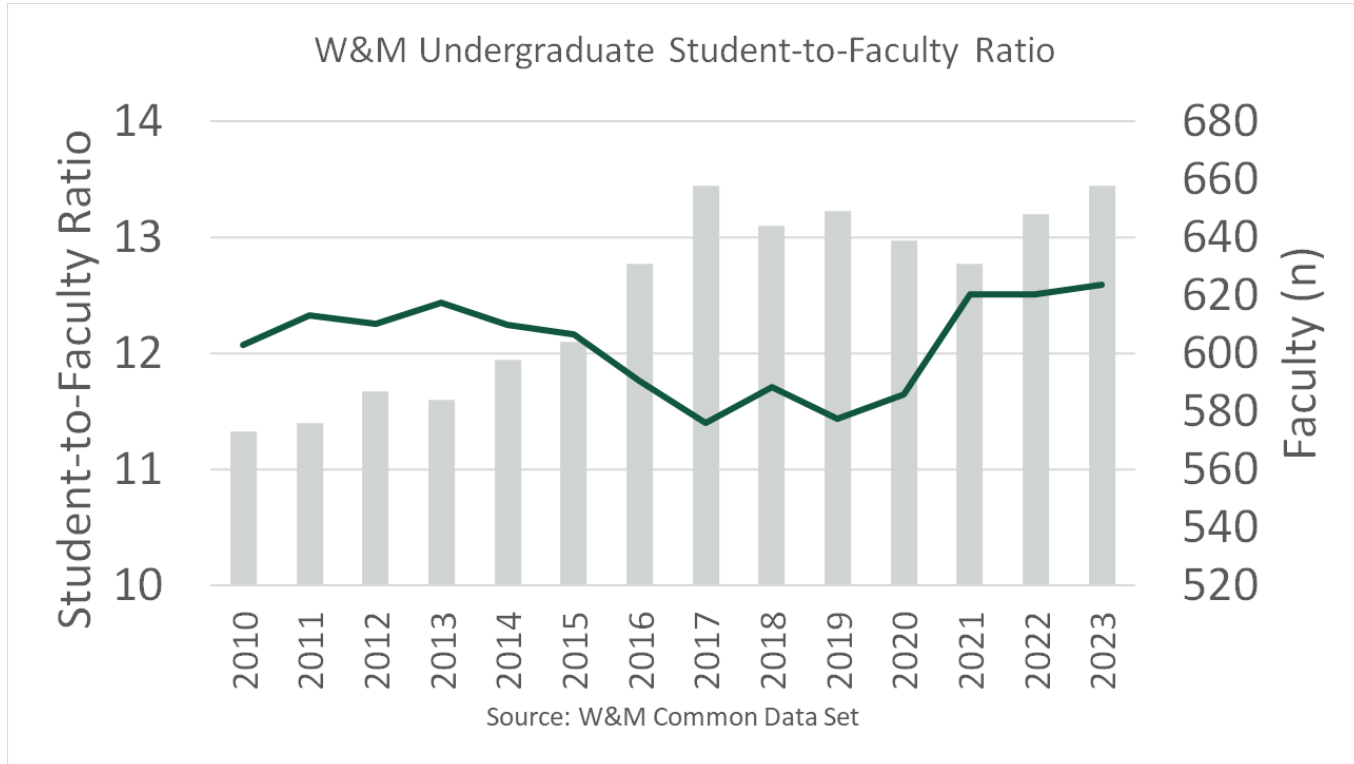
POST-GRADUATE OUTCOMES

Median Salary Comparison of W&M Undergraduates (NACE) to National Undergraduates (NACE) & High School Graduates (BLS)

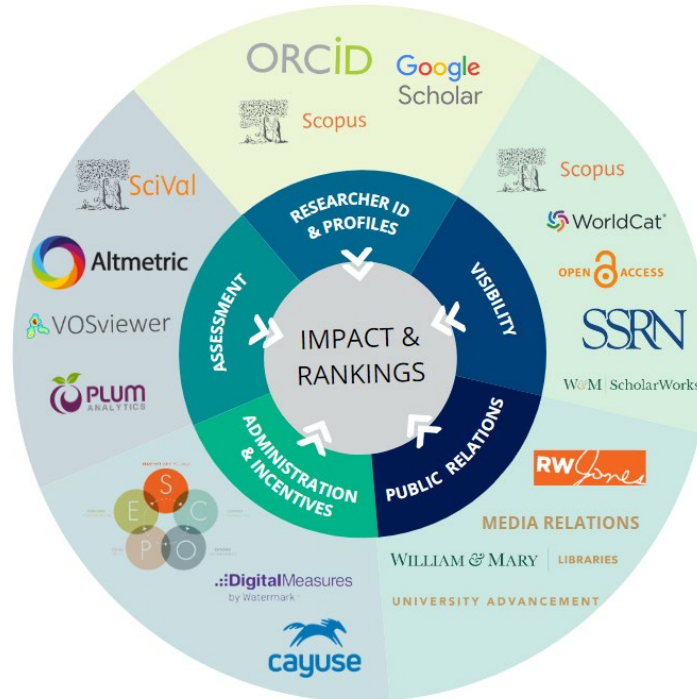


W&M and National Undergraduate data is reported 6-months post-graduation to the National Association of Colleges and Employers (NACE). High School Graduate data is the median earnings of full-time and salary workers 25 years and over, from the Bureau of Labor Statistics.

FACULTY IMPACT: TEACHING

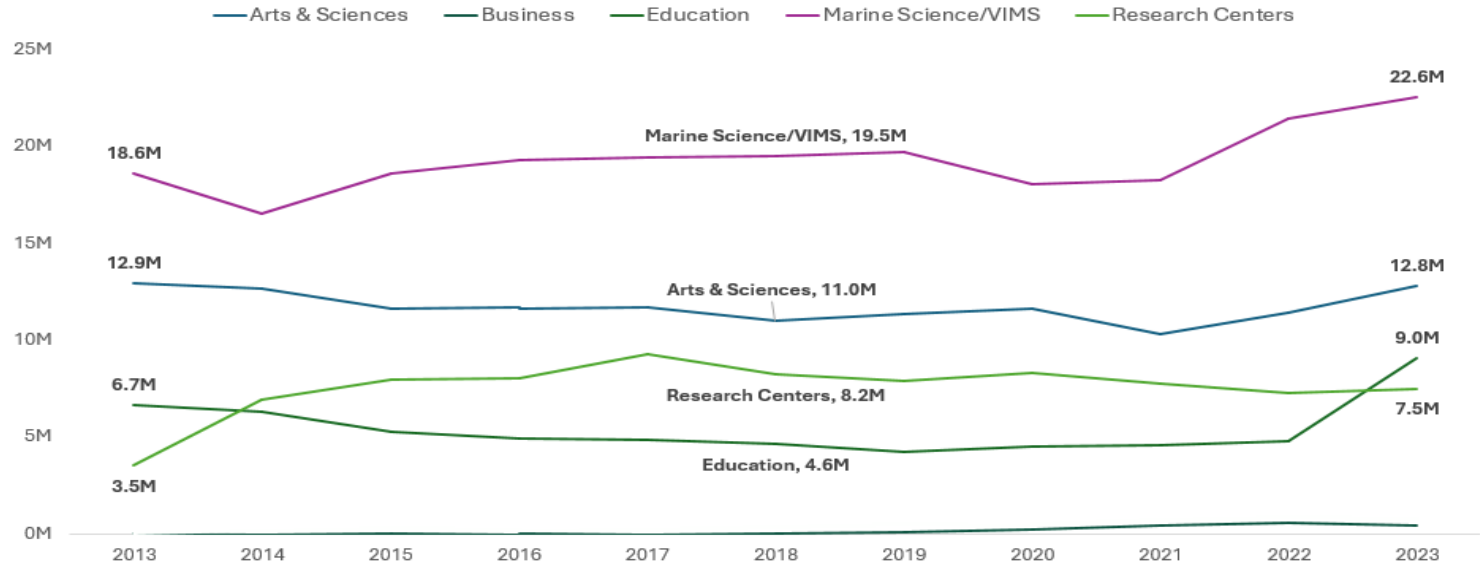


FACULTY IMPACT: RESEARCH



RESEARCH EXPENDITURES

Total External Research Expenditures

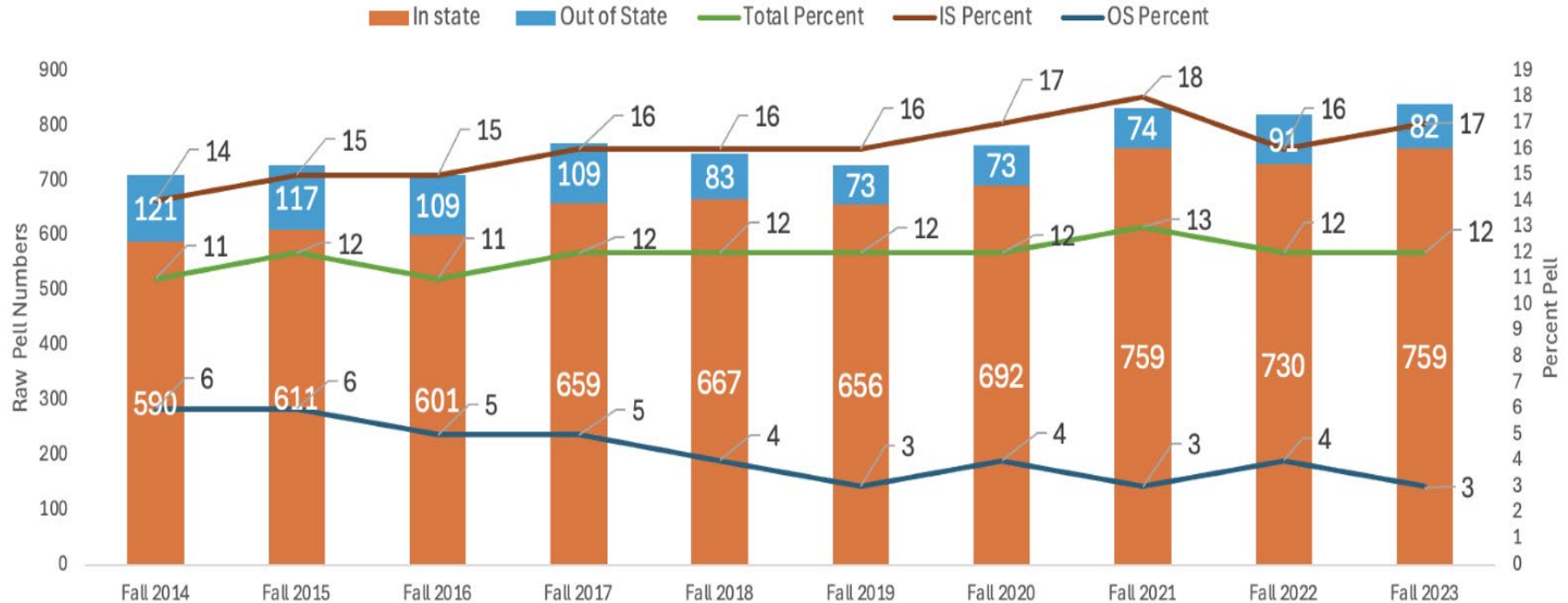


FY 2023: \$32M Williamsburg/\$22.6M Marine Science/VIMS

ENROLLMENT

Percentages of Out of State/In State Pell Enrollment: Raw Numbers

Source: W&M Institutional Research Factbook



WHY THESE KPIS?

- Each metric links to fulfilling our mission and provides a lever for improvement for rankings and Carnegie status
- Focus on student success
- Identification of levers for change
- Reality of timeline for change to occur

WHAT YOU SHOULD KNOW

- Six working groups with 40 faculty/staff/administers campus wide
 - What contributes to the current status?
 - What levers for change can improve outcomes?
- Elevation of 2023/2024 KPI to University QEP for SACSCOC
 - Applied Learning Opportunities
 - Expanded Scope beyond internships
- Addition for 2024/2025 KPI of Enrollment Composition
 - Aligns with graduation outcomes
 - Focus on Pell

QUESTIONS

